



PACT Meeting #7

NATURAL RESOURCES PRESENTATION

January 13, 2011



Presentation Topics

- **Resource Background**
 - **Impacts by Alternative**
 - **Mitigation**
-

- **Natural resources in the project area include:**
 - **Wildlife**
 - **Riparian vegetation**
 - **Wetlands**
-



Wildlife and Riparian Vegetation

- **Wildlife resources include animal species (mammals, birds, reptiles, amphibians, and fish)**
 - **Riparian vegetation provide food and shelter and habitat for many species and are particularly important to urban wildlife as transportation corridors**
-

- **Wetlands is the collective term for marshes, swamps, bogs, and other areas found in flat vegetated areas or in depressions in the landscape**
 - **Vital link between water and land**
 - **In order to protect wetlands, federal guidelines have been established for development that impact wetlands**
-

Impacts by Alternative

- **Wetlands and Riparian Vegetation**
 - **Permanent impacts would occur due to placement of bridge piers at Sand Creek (shadows created by new bridges)**
 - **Vegetation would be temporarily disturbed due to construction activity, but would be reseeded after completion**
 - **Rivers and streams serve as habitat for urban wildlife and could be temporarily impacted by construction**
-

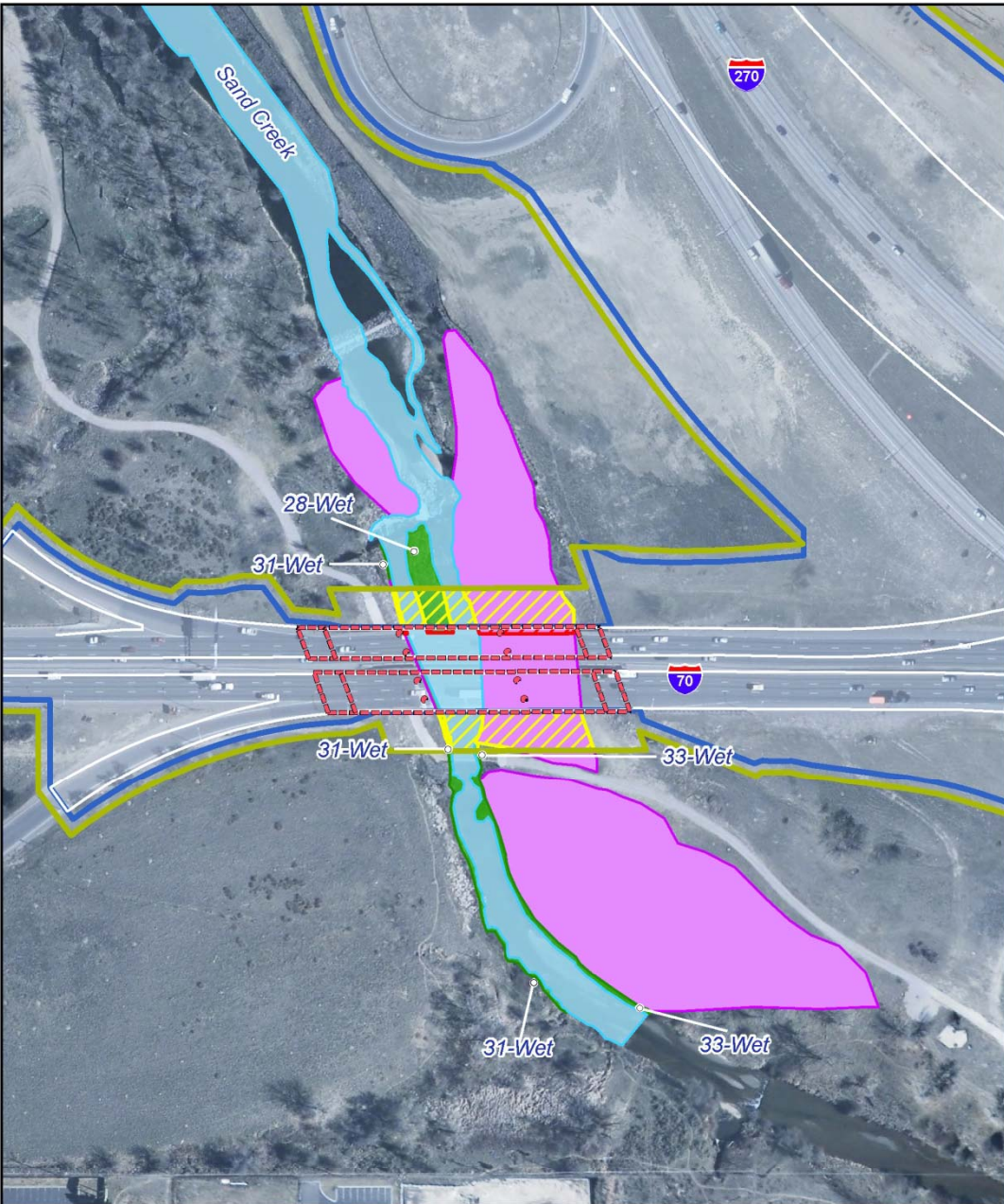
► Sand Creek Crossings by Location



Area 1: Realignment

46th Avenue

- 0.03 acres of permanently impacted wetlands
- Temporary impacts to wildlife habitat and connectivity



Legend

Resources	Impacts	Design Features
Open Water	Permanent	Bridge Structure
Riparian	Temporary	Construction Limits
Wetland Mitigation Site		Edge of Pavement
Wetlands		Sand Creek Open Space Trail
		Toe of Slope
		Pier Location

Area 1: Current Alignment

I-70 and ramps

- 0.22 acres of permanently impacted wetlands
- Loss of wildlife habitat & riparian vegetation due to new piers & structures



Legend

Resources

- Open Water
- Riparian
- Mitigation Site
- Wetlands

Impacts

- Permanent
- Temporary

Design Features

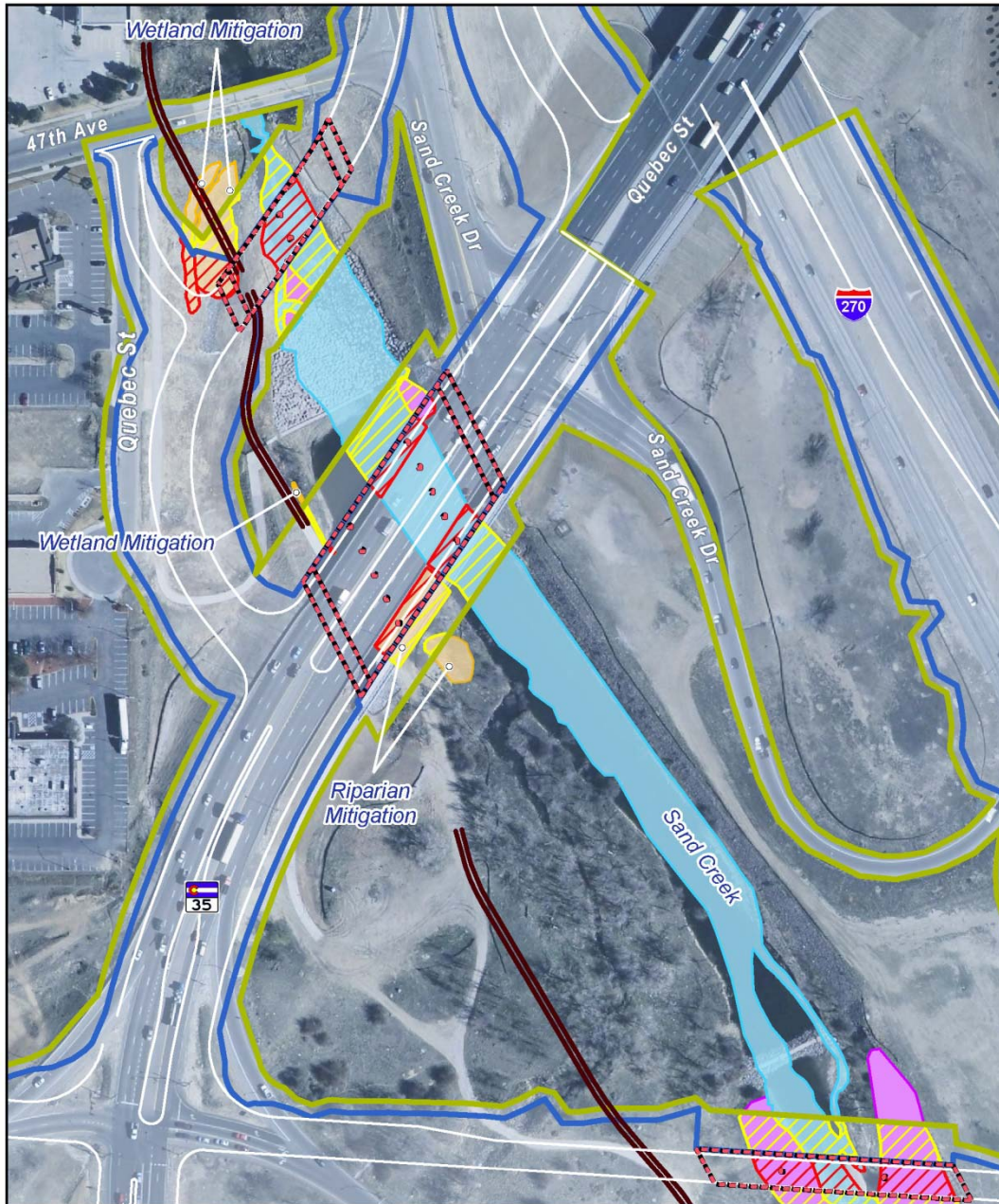
- Bridge Structure
- Construction Limits
- Edge of Pavement
- Sand Creek Open Space Trail
- Toe of Slope
- Pier Location



Area 2: Current Alignment

Quebec Street

- 0.09 acres of permanently impacted mitigation site
- Temporary impacts to wildlife habitat and connectivity



Legend

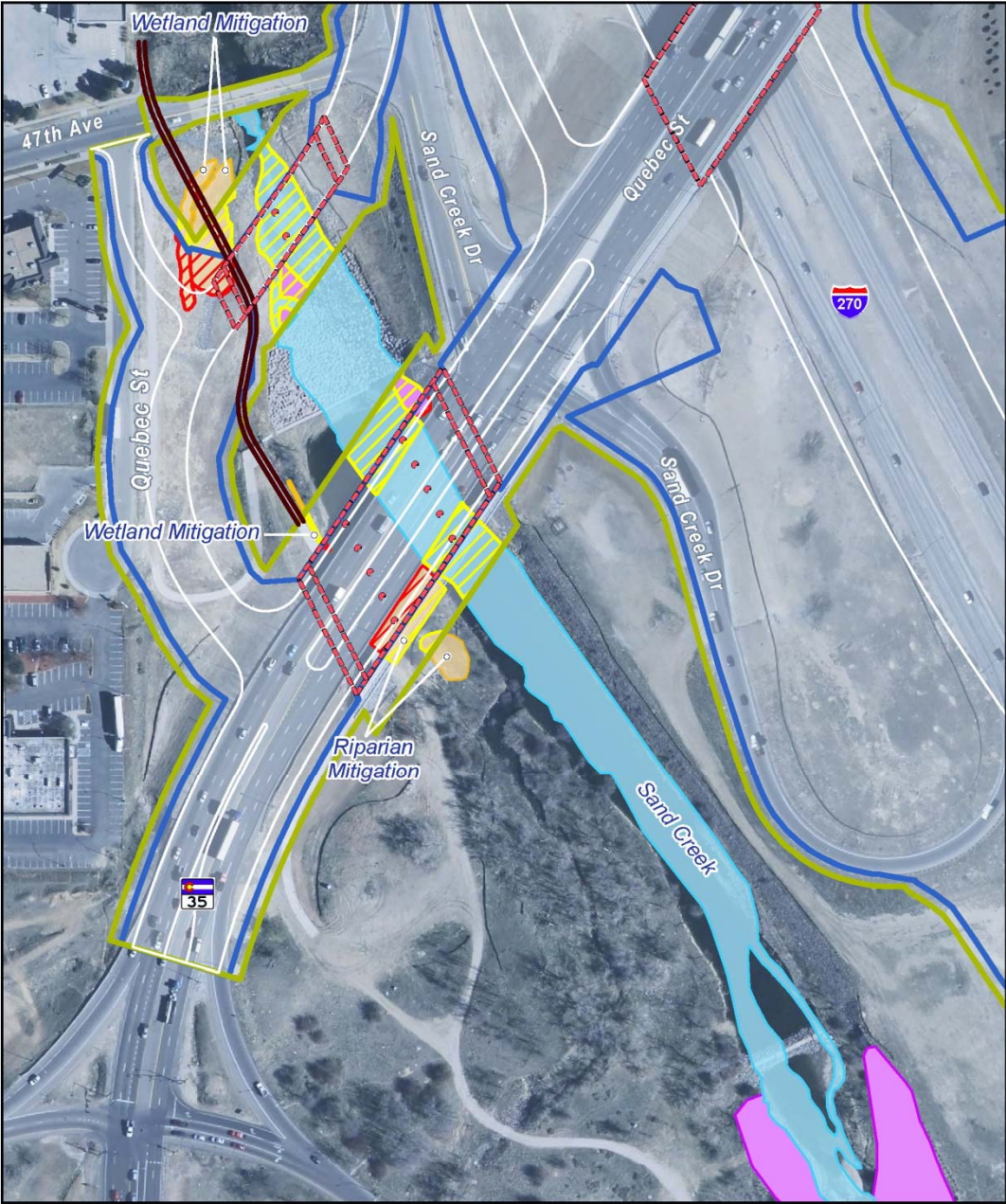
Resources	Impacts	Design Features
Open Water	Permanent	Bridge Structure
Riparian	Temporary	Construction Limits
Mitigation Site		Edge of Pavement
Wetlands		Sand Creek Open Space Trail
		Toe of Slope
		Pier Location



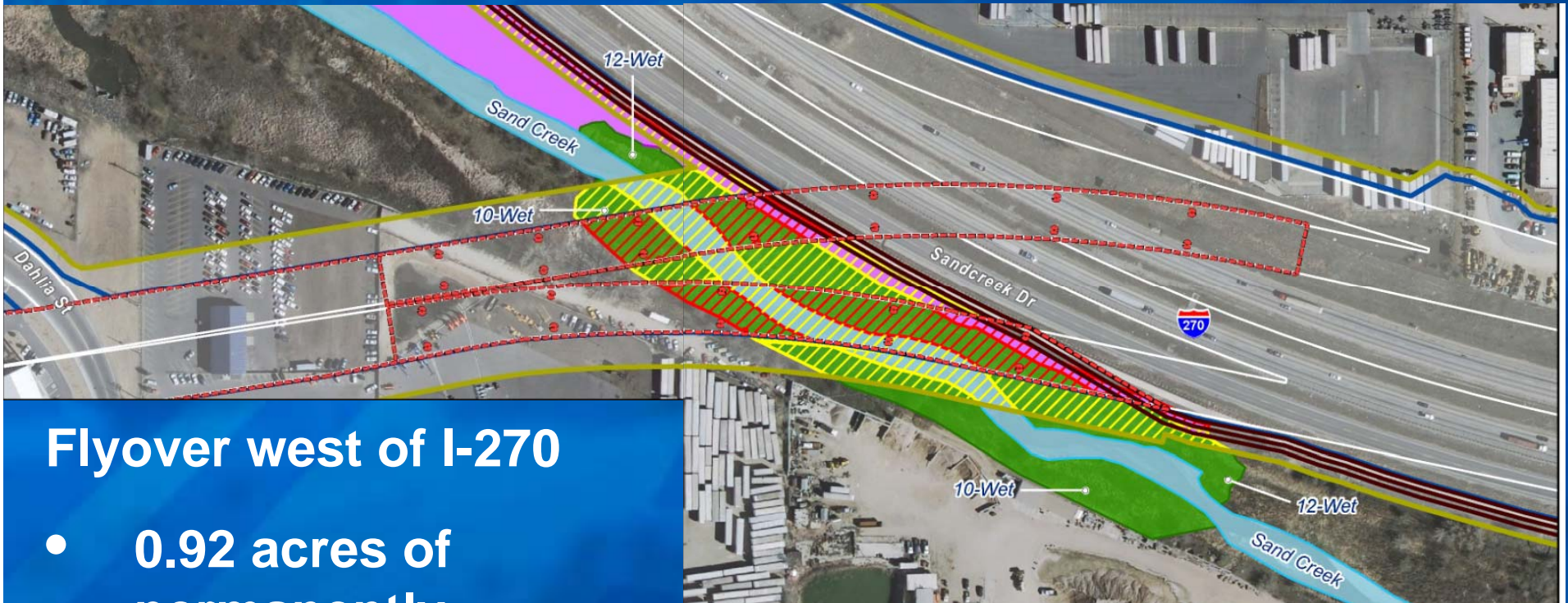
Area 2: Realignment

Quebec Street

- 0.11 acres of permanently impacted mitigation site
- Temporary impacts to wildlife habitat and connectivity





Area 3: Realignment



Flyover west of I-270

- 0.92 acres of permanently impacted wetlands
- Loss to wildlife habitat & riparian vegetation due to new piers & structures

Impacts by Alternative

Impacts		
	Alternative  1 EXISTING	Alternative  4 REALIGNED
Acres of Permanent Effect		
Jurisdictional Wetlands	0.31	1.06
Mitigation	Coordination with United States Army Corps of Engineers (USACE) for Section 404 permit under the Clean Water Act.	

- **Onsite replacement for loss of trees and vegetation used for riparian habitat**
 - **All impacted wetlands will be replaced on a 1:1 basis**
 - **Construction best management practices**
-

➡ Questions?
