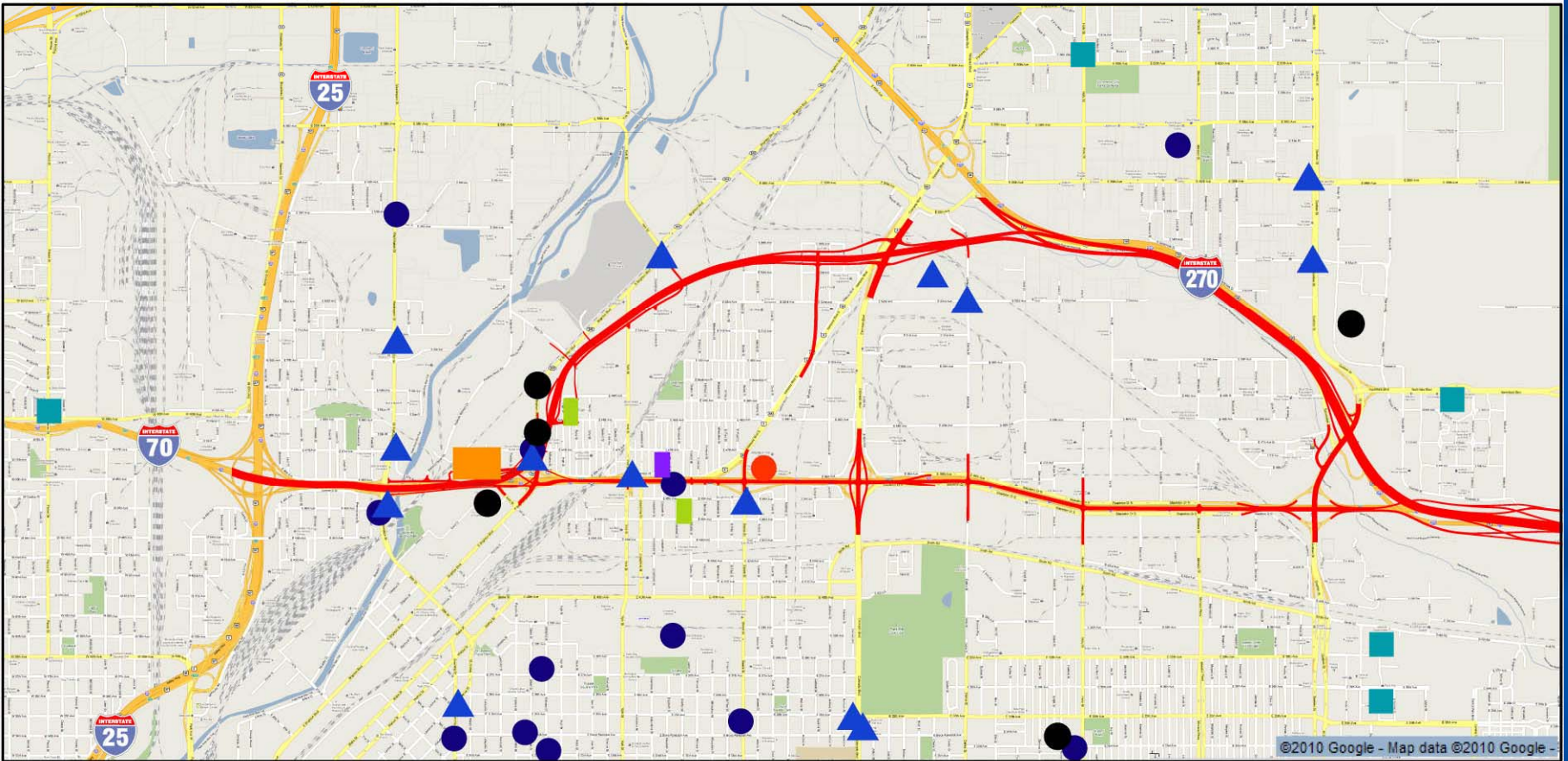


- **Low-income and minority populations would be affected by all project alternatives for the following resources:**
 - **Social and Economic Conditions**
 - **Residential and Business Acquisitions**
 - **Air Quality**
 - **Noise**
 - **Construction**
-

Impacts by Alternative



©2010 Google - Map data ©2010 Google -



Park

Grocery

Convenience

Market

Post Office



National Western Complex

Denver Rescue Mission

Swansea Elementary School

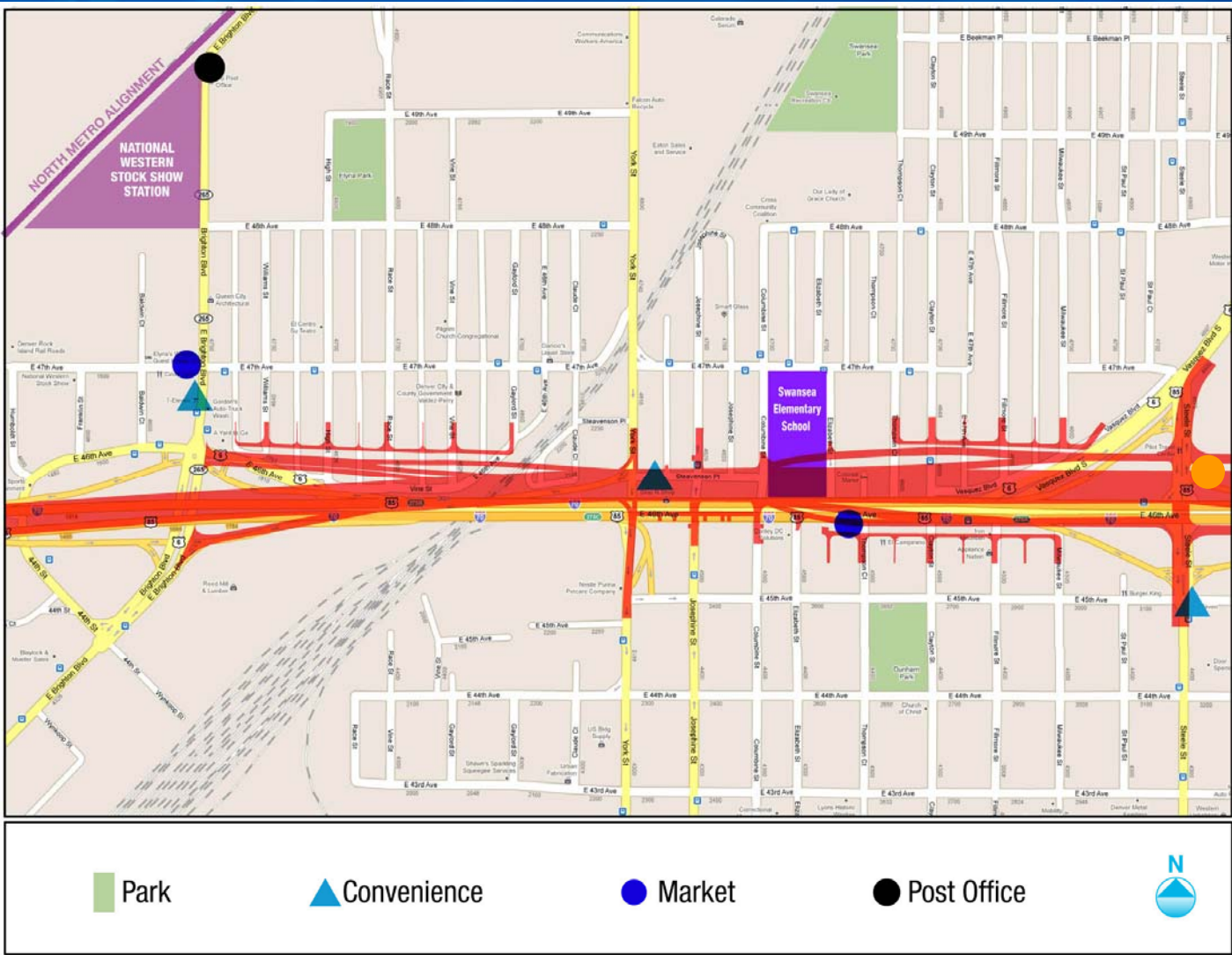




Current Alignment North

- **93 residential acquisitions**
 - **45 commercial acquisitions, including community markets and stores**
 - **Swansea Elementary School**
 - **Denver Rescue Mission**
-

Current Alignment North

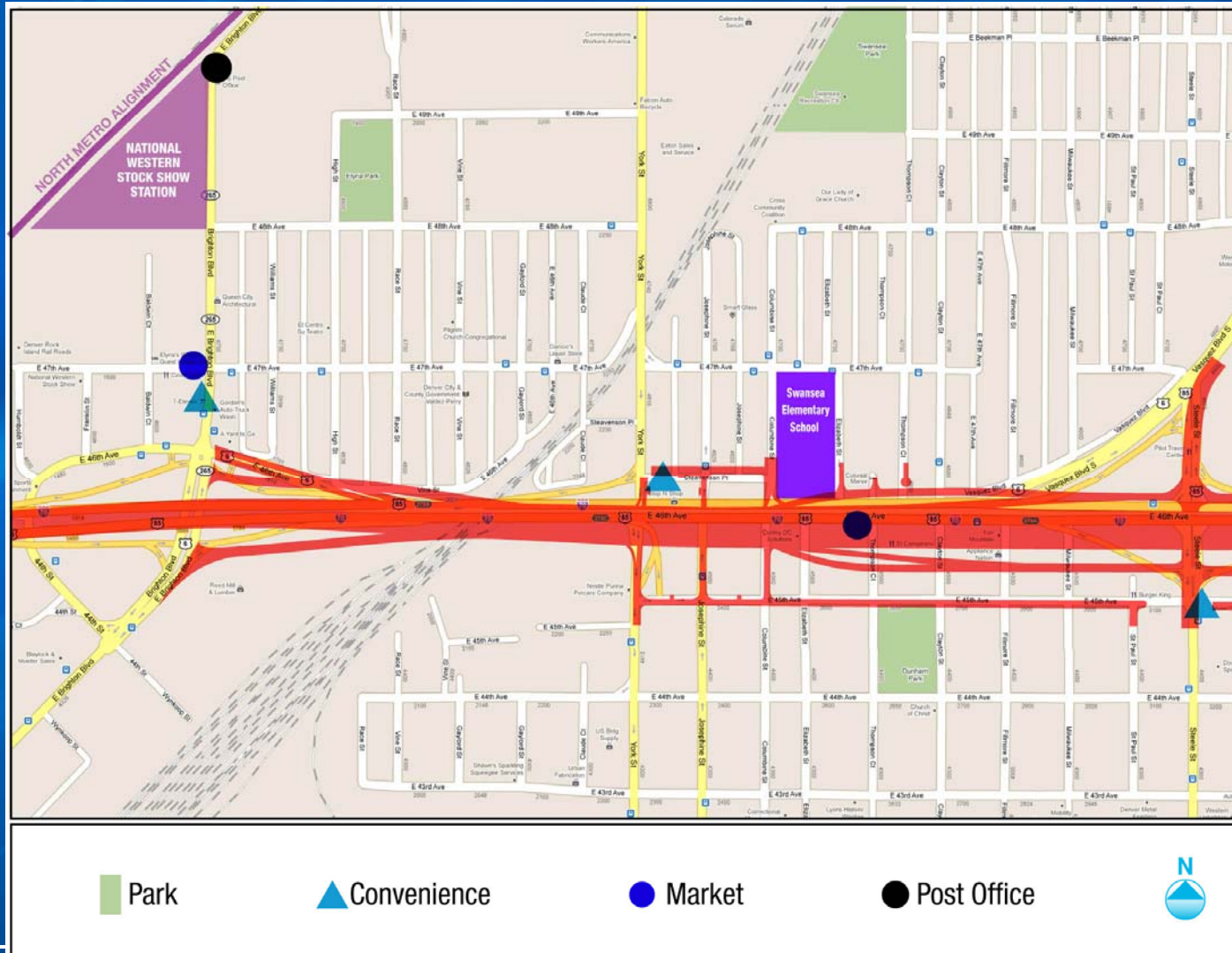




Current Alignment South

- 64 residential acquisitions
 - 42 commercial acquisitions, including community markets and stores
 - Proximity impacts to Dunham Park
 - Purina
-

Current Alignment South





Realignment East

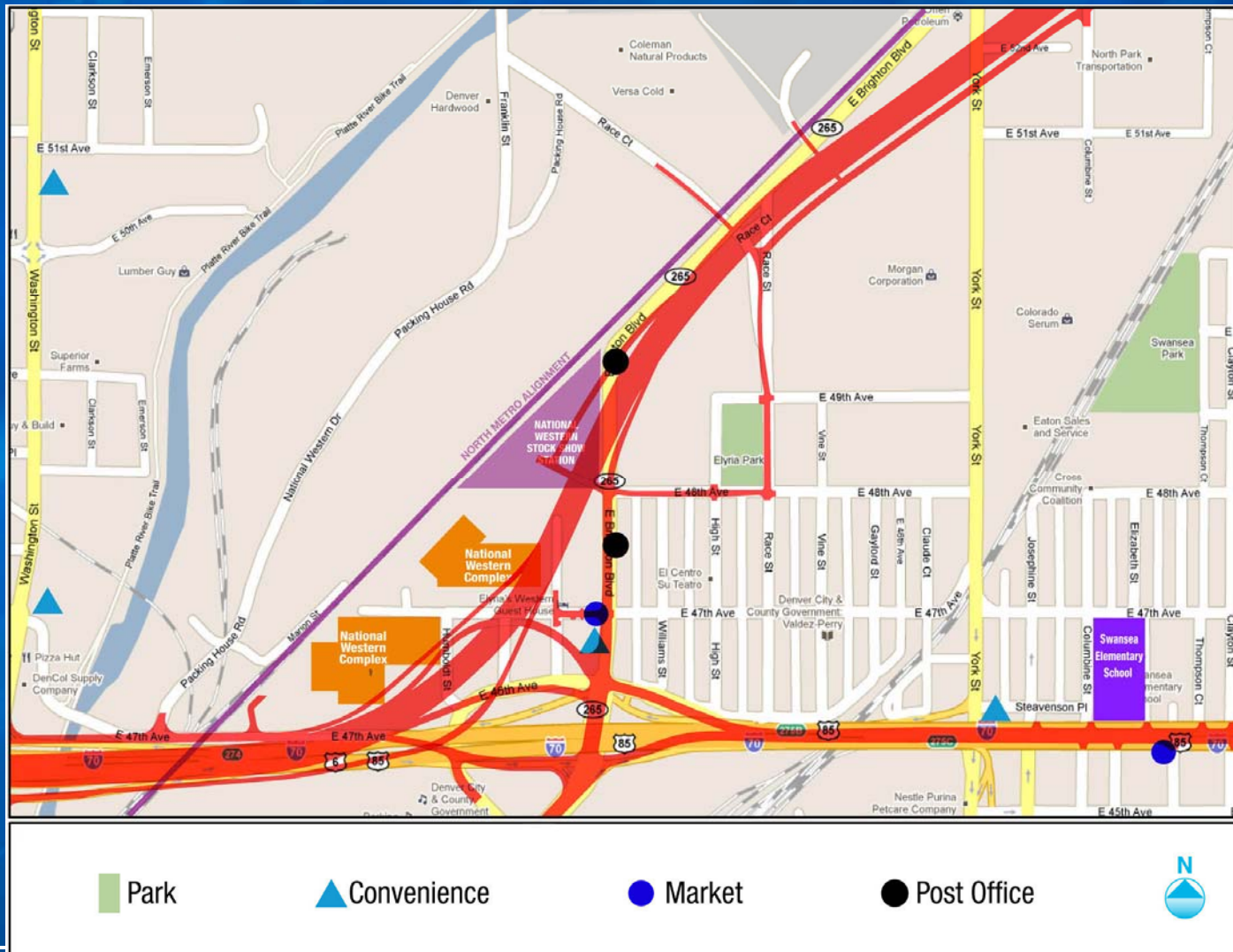
- **Post Office**
 - **Proximity to Elyria Park**
 - **Proximity to Future FASTRACKS station**
 - **53 residential acquisitions**
 - **52 commercial acquisitions, including community markets and stores**
-



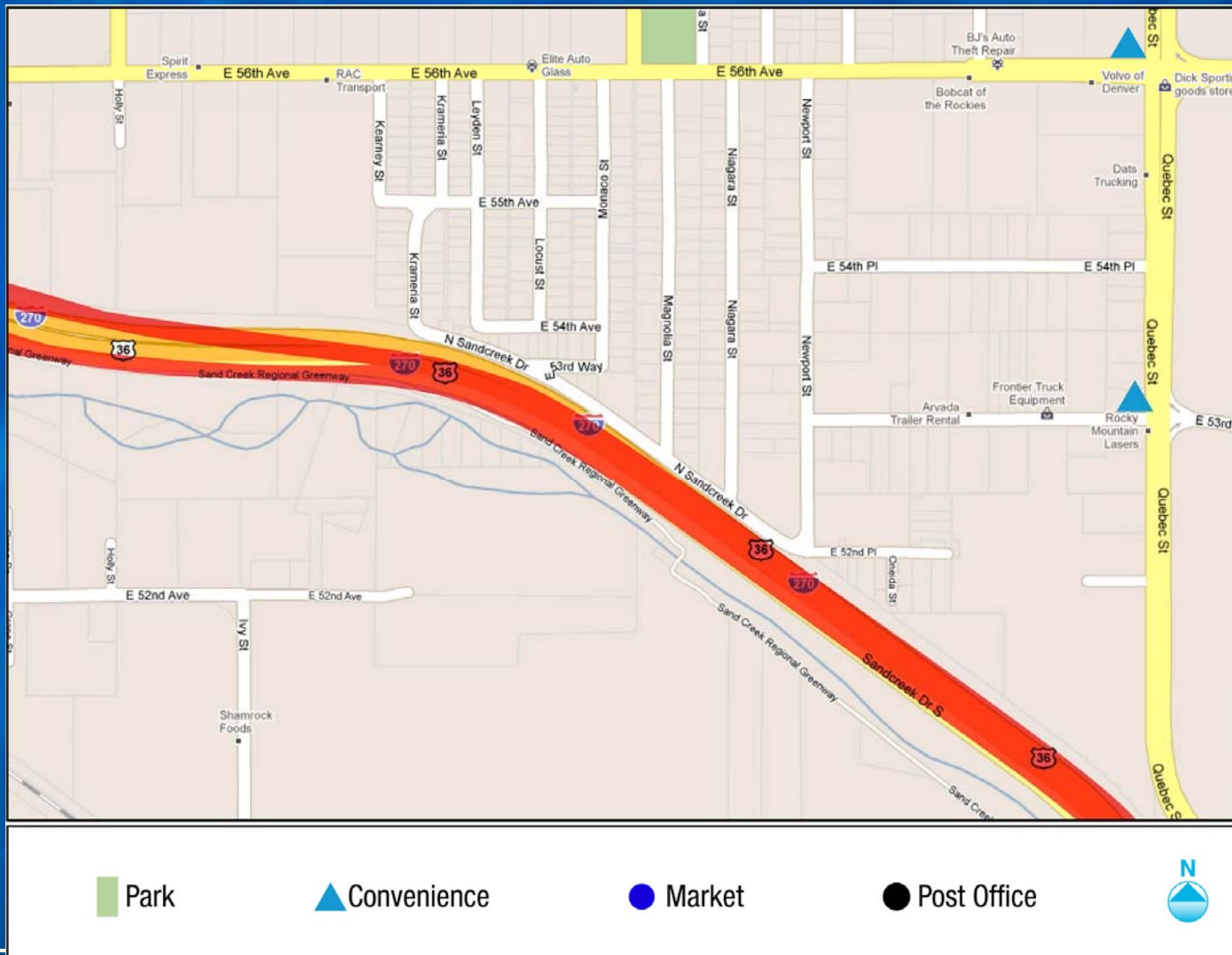
Realignment West

- **Post Office**
 - **National Western Stock Show**
 - **Proximity to Future FASTRACKS station**
 - **Proximity to Elyria Park**
 - **18 residential acquisitions**
 - **58 commercial acquisitions, including community markets and stores**
-

Realignment West



Realignment





Impacts by Alternative

	Current Alignment North	Current Alignment South	Realignment East	Realignment West
Residential	93	64	53	18
Commercial	45	42	52	58
Post Office			✓	✓
Swansea Elementary	✓			
Denver Rescue Mission	✓			
Park proximity		Dunham	Elyria	Elyria
Station proximity			✓	✓
National Western				✓
Purina		✓		