



Draft EIS Public Hearing

December 9, 10, and 11, 2008



Please be seated. The public hearing will begin shortly.

Favor de tomar asiento, la audiencia pública comenzará en breve.



Draft EIS Public Hearing

December 9, 10, and 11, 2008



Purpose of Hearing

- To provide an update of recent study developments
- To summarize the Draft EIS
- To provide opportunity for public comment on the Draft EIS

Please note that this presentation is an overview. Detailed information is provided in the DEIS and on open-house boards.



Discussion Topics

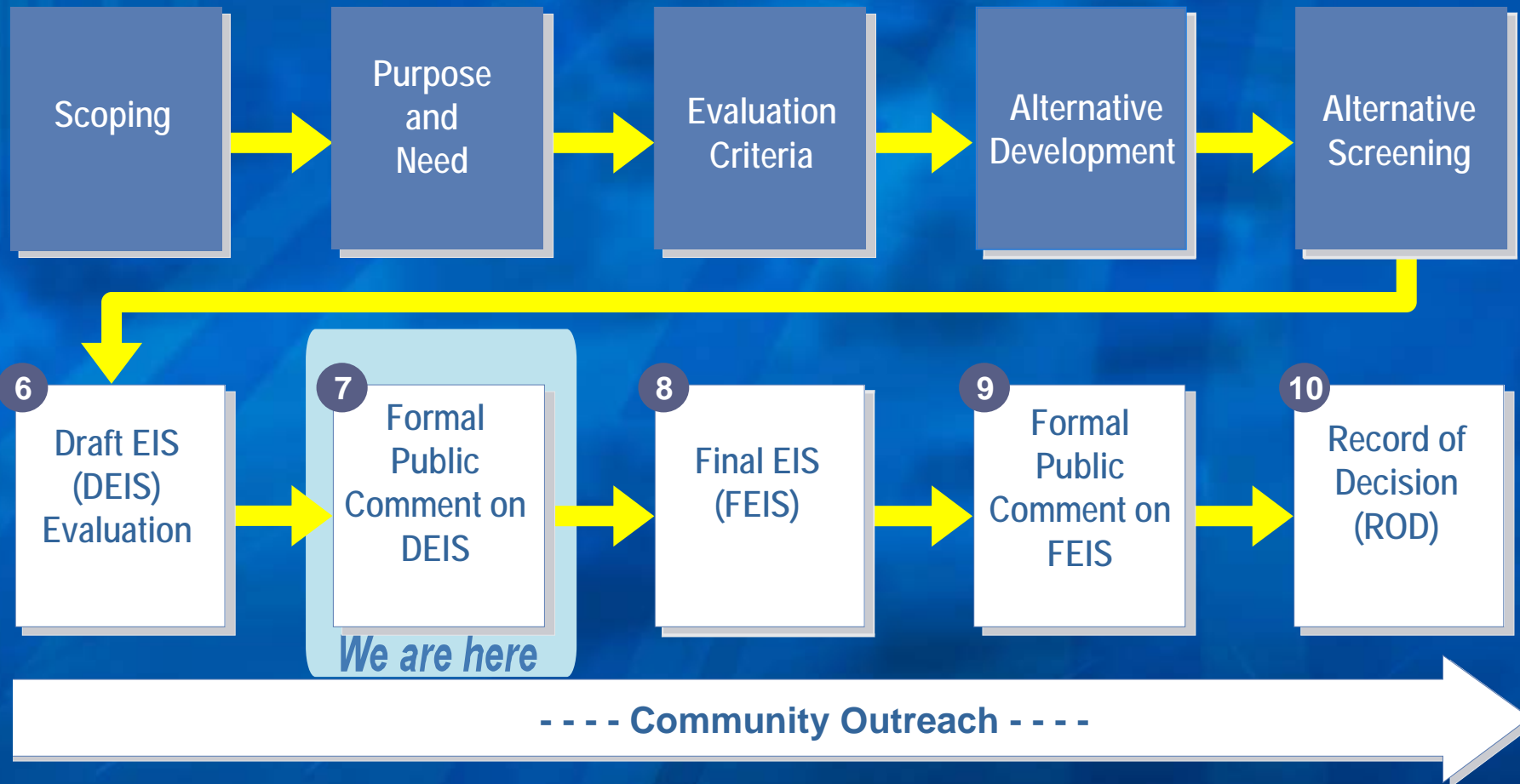
- **Project overview**
 - **Purpose and Need**
 - **DEIS alternatives evaluated**
 - **Transportation benefits and environmental impacts**
 - **Next steps**
 - **Public comments**
-



Project Overview

- **Study began July 2003 as “I-70 East Corridor Environmental Impact Statement (EIS)”**
 - **Multi-modal study, teamed with RTD, examining both highway and transit needs**
 - **Split in June 2006; finding of independent utility**
 - **I-70 East EIS identifying highway improvement between I-25 and Tower Road**
-

Process and Schedule





Purpose and Need

➤ Purpose

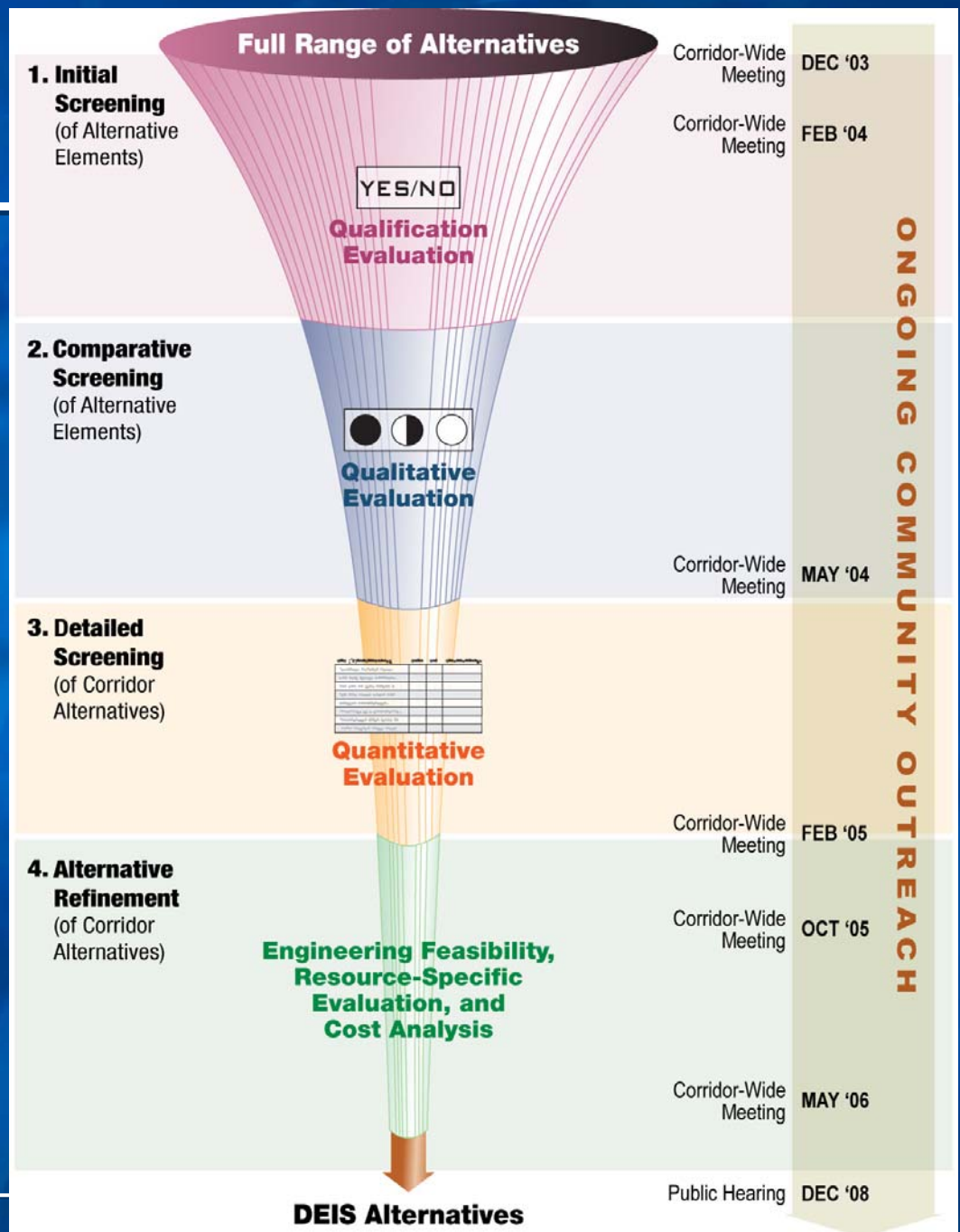
- Improve safety, access, and mobility and address congestion on I-70

➤ Need

- Increased transportation demand
- Limited transportation capacity
- Safety concerns
- Transportation infrastructure deficiencies

No significant change from pre-split Purpose and Need

Alternatives Screening Process





DEIS Alternatives Evaluated

- **No-Action Alternative**
- **Existing Alignment Alternatives**
 - Alternative 1
 - Alternative 3
- **Realignment Alternatives**
 - Alternative 4
 - Alternative 6

**Alternatives 2 and 5 screened during
Alternatives Refinement**

DEIS Alternatives Evaluated

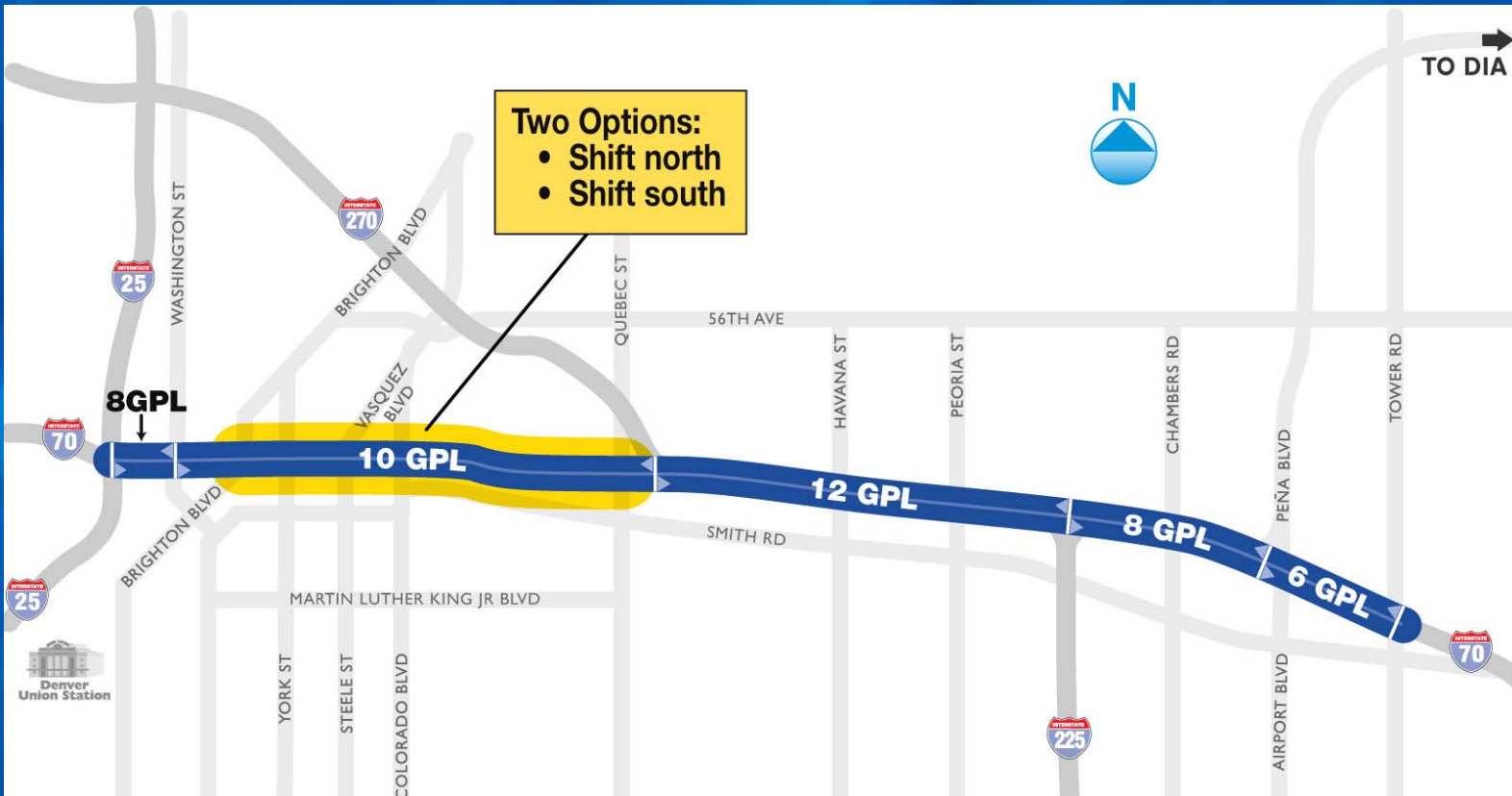
No-Action Alternative



Replaces existing viaduct between Brighton Boulevard and Colorado Boulevard with no additional lanes

DEIS Alternatives Evaluated

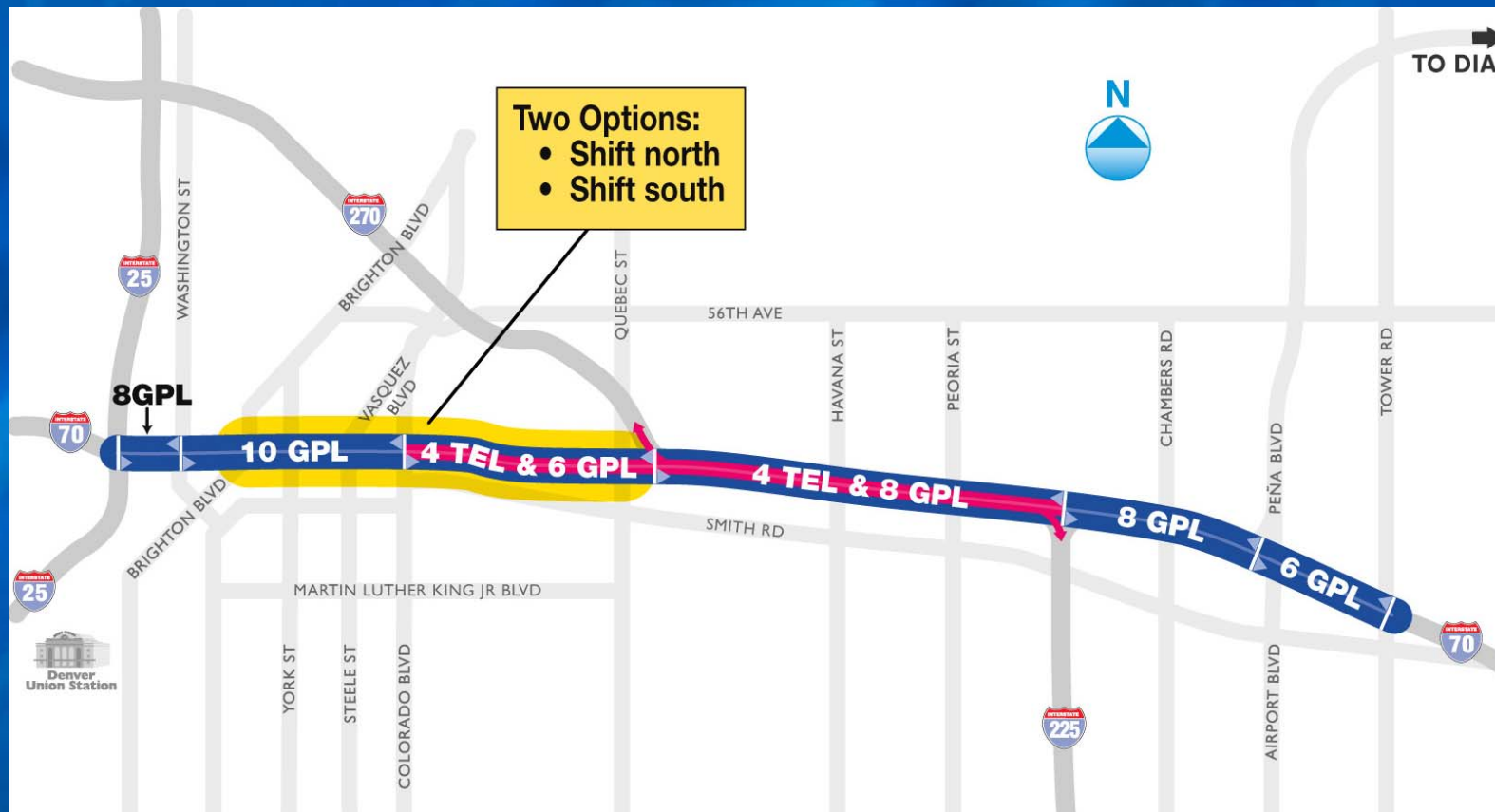
Alternative 1



Current alignment with general purpose lanes (GPL)

DEIS Alternatives Evaluated

Alternative 3



Current alignment with GPL and tolled express lanes (TEL)

DEIS Alternatives Evaluated

Alternative 4



Realignment with general purpose lanes

DEIS Alternatives Evaluated

Alternative 6



Realignment with GPL and TEL



Construction Cost Summary

| Alternative | Construction Cost * (million, 2005 dollars) |
|---------------------|--|
| No-Action North | \$396 - \$411 |
| No-Action South | \$491 - \$606 |
| Alternative 1 North | \$1,260 - \$1,277 |
| Alternative 1 South | \$1,328 - \$1,443 |
| Alternative 3 North | \$1,415 - \$1,432 |
| Alternative 3 South | \$1,479 - \$1,594 |
| Alternative 4 West | \$1,639 - \$1,743 |
| Alternative 4 East | \$1,531 |
| Alternative 6 West | \$1,885 - \$1,989 |
| Alternative 6 East | \$1,785 |

* Cost range reflects variation in right of way costs.



Study Does Not:

- **Identify a preferred alternative**
 - **Have any pre-disposition on one alignment over another**
 - **Identify project financing**
 - **Select a toll/non-toll option**
-



Transportation Benefits

- **Responsive to Purpose and Need, all DEIS build alternatives:**
 - **Provide increased capacity and reduce congestion**
 - **Improve safety by widening shoulders and improving interchanges**
 - **Replace aging infrastructure**
 - **Reduce peak period travel time for I-70 travelers**
 - **Provide improved bicycle and pedestrian circulation**
-



Environmental Impacts

- **Analysis was conducted to determine the impacts of the project alternatives on different social, environmental, and economic resources**
 - **Where resources are impacted, mitigation measures are provided in the document**
-



Environmental Impacts Resources Analyzed

- Social and economic conditions
 - Environmental justice
 - Land use and zoning
 - Land acquisition, displacements, and relocation of existing uses
 - Historic preservation and paleontological resources
 - Visual and aesthetic qualities
 - Parklands and recreation areas
 - Air quality
 - Energy
 - Noise
 - Biological resources
 - Floodplains and drainage/hydrology
 - Wetlands and waters of the U.S.
 - Water quality
 - Geology and soils
 - Hazardous materials
 - Utilities
 - Construction
 - Cumulative effects
-



Environmental Impacts with Noticeable Differences

- **Resources impacted by the alternatives with noticeable differences in effects:**
 - **Social and economic conditions**
 - **Land acquisition (right of way)**
 - **Historic**
 - **Parklands and recreation areas**
 - **Hazardous materials**
 - **Wetlands and waters of the U.S.**

 - **Mitigation measures are included for these resources**
-



Environmental Impacts without Noticeable Differences

- **Resources impacted by the alternatives without noticeable differences in effects:**
 - Visual
 - Air quality
 - Energy
 - Noise
 - Biological resources
 - Floodplains and drainage/hydrology
 - Water quality
 - Utilities
 - Construction
 - Cumulative effects

 - **Mitigation measures are included for these resource**
-



Environmental Impacts No Impacts

- **Resources not present in study area and not evaluated:**
 - Wild and scenic rivers
 - Prime and unique farmlands
 - Section 6(f) – Park property or features paid with Land and Water Conservation Fund Grants

 - **Resources not impacted by the alternatives, but that have standard mitigation measures:**
 - Geology and soils
 - Paleontological resources
-



Final Steps of DEIS

- **Draft EIS released on November 14, 2008**
 - **Activities during comment period:**
 - **Comment period has been extended to January 31, 2009**
 - **Stakeholder briefings**
 - **Elected official briefings**
 - **Website updates**
 - **Media outreach**
 - **Three public hearings: December 9-11**
-



DEIS Public Hearings

- **Public hearing dates and locations**
 - December 9 – Aurora, Sable Elementary School
 - December 10 – Commerce City, Recreation Center
 - December 11 – Denver, Bruce Randolph Middle School

 - **Identical schedule each night**
 - Open House: 5:00 – 6:00 p.m.
 - Presentation and comments: 6:00 – 8:00 p.m.
-



Steps Following DEIS

- **Review and respond to public comment**
 - **Select a Preferred Alternative**
 - Working closely with local jurisdictions
 - Continuing stakeholder engagement
 - Continuing coordination groups
-



Steps Following DEIS

➤ Prepare Final EIS

- Update impact analysis of Preferred Alternative and No-Action Alternative
- Prepares finance and phasing plans
- Continues public involvement activities
- Includes public hearing

➤ Complete Record of Decision

- Final FHWA decision allowing funding and construction

Timing will be determined after the public comment period ends.



How to Comment on DEIS

- **Comments may be made on contents and findings of Draft EIS**
 - **Comments may be made in the following ways:**
 - **Public statements (recorded in this forum)**
 - **Individual statements to court recorder at this meeting**
 - **Written comments mailed to CDOT**
 - **Written comments submitted through www.I-70East.com**
-



How to Stay Involved

➤ **Comment through the Web site:**

www.I-70East.com

➤ **Call the study team:**

303-294-9300

➤ **Write the study team:**

4670 N. Holly Street, Denver 80216



Draft EIS Public Hearing

December 9, 10, and 11, 2008